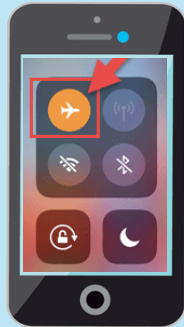


SAFE HOME TECHNOLOGY

Tips to Reduce Wi-Fi Smog in Your Home or Office

1. iPhone or Androids

Keep on Airplane mode with Wi-Fi and Bluetooth OFF until needed; always use on speakerphone. Turn off cell at night and keep away from all bedrooms.



2. Wi-Fi Routers

Keep at a distance from workspace and sleeping areas and where children and pets play and sleep.



3. Hardwire Home/Office using Ethernet wires (Cat6 or better) to various places in home or office where you use computer or Wi-Fi devices.



4. If your device does not have a built in Ethernet port/connection, purchase Ethernet adapters for specific devices such as tablets, phones, iPads, etc.

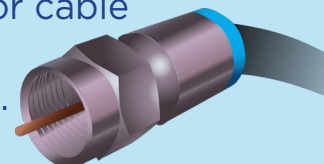


5. Wi-Fi Printers

Turn off Wi-Fi settings on printers and connect using Ethernet cable; everyone on your home network can print to it.

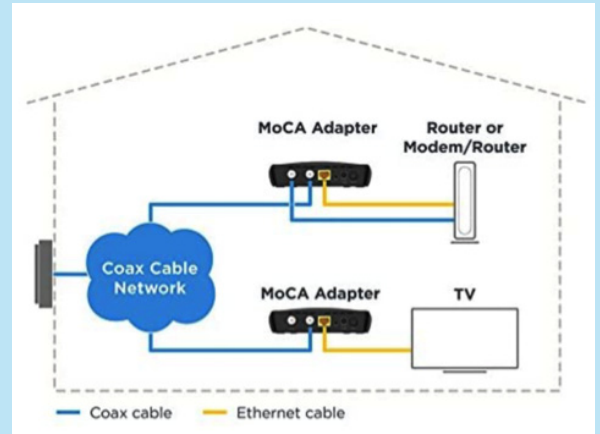


6. If you don't have Ethernet cable installed and you can't afford to retrofit with Ethernet (Cat6 cables), as an alternative, you can use existing coax cables that may have been installed for cable or satellite TV service.



How to Retrofit with Existing Coax Cable to Ethernet

For homes with existing coax cable in rooms there is an option to convert from coax to Ethernet if running new Ethernet (Cat6) type wiring is too expensive:



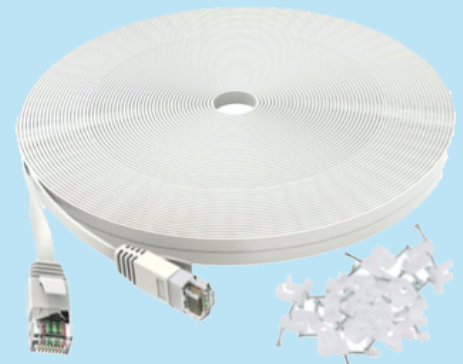
1. Motorola MoCA Adapter for Ethernet Over Coax, Plug and Play, Ultra Fast Speeds, Boost Home Network for Better Streaming and Gaming (1 Gbps - MoCA 2-Pack)

If you use the MoCA devices you will need one at your modem/router and one at the other end where your devices will be plugged in.

2. At the computer/iPad/iPhone devices you will need an Ethernet connector adapter if you don't have one built into the device. Search online for your model/type Ethernet adapters. Search iPad Ethernet connector and choose the one that matches your type/connector/power.



3. Purchase Ethernet cable at the length you need to wire all home devices.



4. To connect more devices to the MoCA listed in #1, you can add an Ethernet Port Replicator TP-Link to the MoCA. Using the TP-Link, you can hardwire Ethernet to connect additional devices, such as a desktop computer, laptop, iPad, gaming console or printer in a room or office.

Connect to a WiFi-emitting device and quickly add additional Ethernet ports to your mesh system, routers, Smart TV and even switches.



Once you are "hardwired" your speed will increase substantially!
Enjoy your safe and responsible wired technology.

Join **Connecticut for Responsible Technology** at www.CT4RT.com to learn more.

